

Midland Mencap provide a wide range of services, including:

- Information and advice on a wide range of learning disability issues.
- Playgroups, Youth Clubs, holiday play activities.
- Supported housing and tenancy support service.
- Parent support groups.
- Domiciliary Care.
- Social and leisure clubs for adults.
- Information on voluntary and work opportunities.
- Carer services.
- Support and advice for individuals and carers from Black and Ethnic minority communities.

For more information on our services please contact us on: 0121 442 2955

Or email: info@midlandmencap.org.uk



Registered Charity No. 1043360
Registered Company No. 3006451



Saturday Playscheme

For children with
learning disabilities
aged 5 to 12 years



Supported by a team of qualified trained and experienced staff

A wide range of activities

Saturday Playscheme



Saturdays
10.00am—3.30pm
(on a rota basis)

Fee per activities
or
Annual Fee £90
(in instalments)

At
Kennedy House,
Bottetourt Road,
Weoley Castle,
Birmingham, B29 5TE

Want to know more?

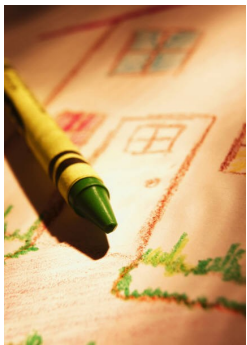
Contact us at:
Midland Mencap
Kennedy House
Bottetourt Road
Weoley Castle
Birmingham
B29 5TE

Tel: 0121 256 1500

Email: cysenquiries@midlandmencap.org.uk

www.midlandmencap.org.uk

Outings



Play

Leisure



Ofsted Inspected